



# **MPNA Series**

**Self priming pump MPNA serie**

MPNA series pumps are one-stage self-priming pumps for discharging ACIDS, BASES and CHEMICAL EFFLUENTS.

It eliminates the air mixed with the liquid coming into the pump and it primes itself.

Once the liquid inside the tank is removed. the pump may go on working with the liquid inside it for 7 minutes without suffering damage.

MPNA series can suck to a depth of up to 3 m. with no need for foot valve.

The shaft sealing systems meets the needs of the process with the possibility of installing a wide range of market seals, either single, double opposition or external well balanced.

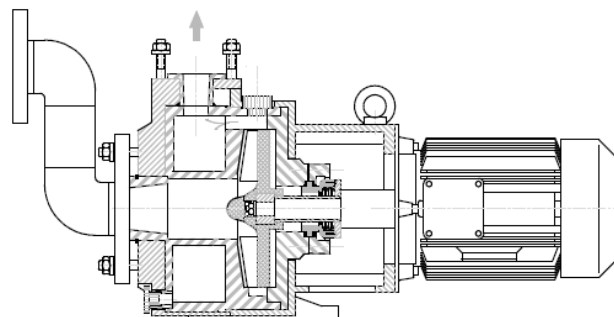
Due to its small size it can be put on top of a trolley and it is portable.

### DRIVES

- Threephase electric motor.
- Single phase electric motor.
- Gasoline engine driven.

### APPLICATIONS

MPNA are widely used for truck tank draining. The scope of uses of MPNA are wide-ranging: Chemical Industry, water treatment processes, etc



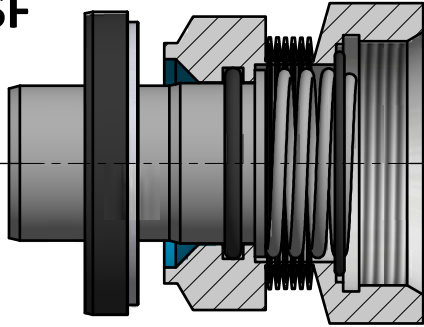
#### CHARACTERISTICS

- Flow up to 30 m<sup>3</sup>/h.
- Head up to 40 m.c.l.
- Suction head 3 m.

#### MATERIALS

- PP
- PEH
- PVC
- PVDF
- PTFE

Type **SF**



**MATERIALS**

-SF: PTFE+Vx1/CERAMIC

-SC: SSiC/SSiC

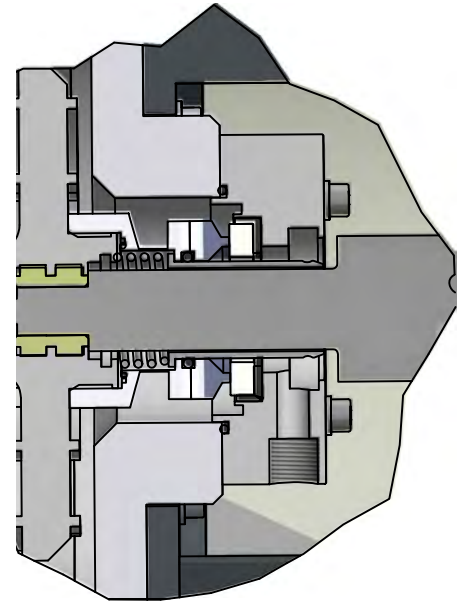
GASKETS:

-FPM/EPDM/PTFE/FFKM

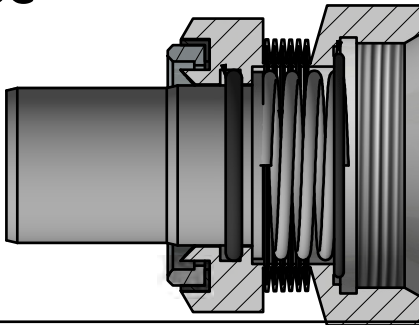
**OPERATION LIMITS:**

V=8,44 m/s

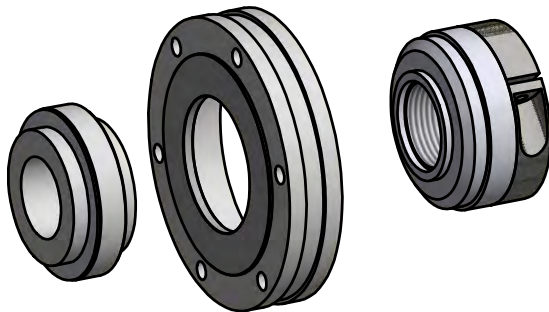
P= 6 bar



Type **SC**



Tipo **SE**



**MATERIALES**

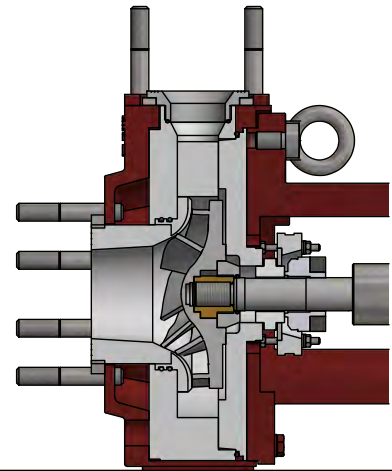
-PTFE+Vx1/CERAMIC -SSiC/SSiC

GASKETS:

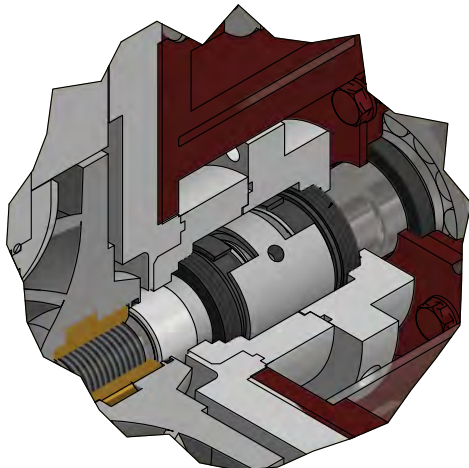
-FPM/EPDM/PTFE

**OPERATION LIMITS:**

V=8 m/s - P= 9 bar



Type **8622** DOUBLE IN OPPOSITION - API plan 53/54 FLUSHING



**MATERIALES :** SSiC/SSiC

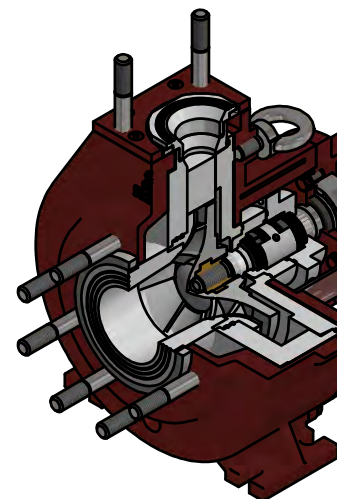
GASKETS: FPM/EPDM

**OPERATION LIMITS:**

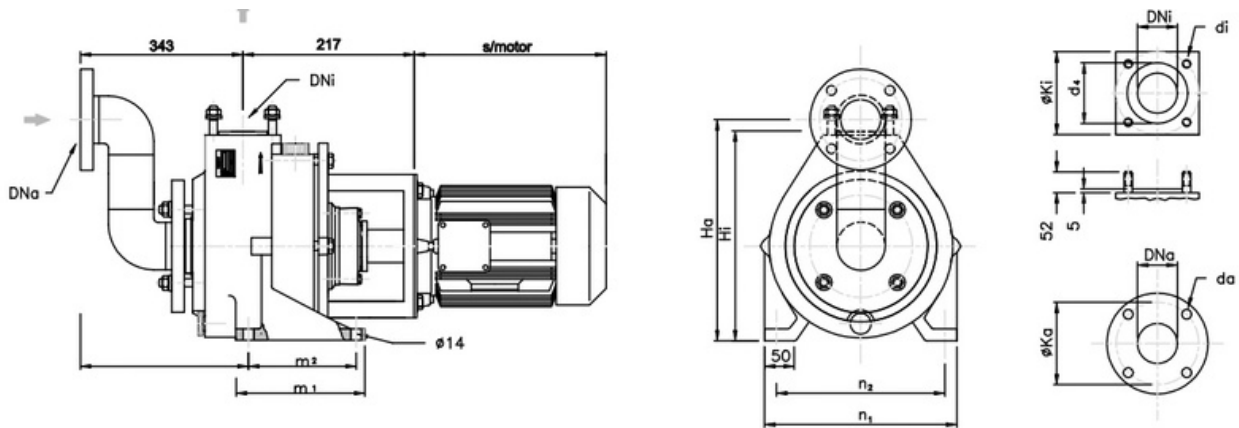
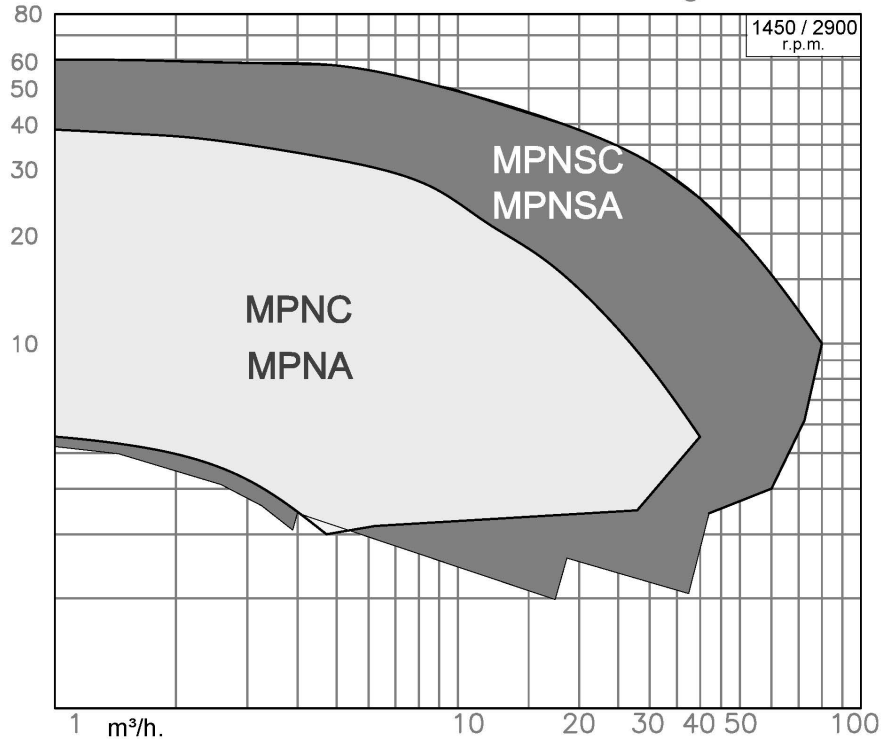
V=25 m/s

P= 10 bar

T= Up to 200°C



m.c.l. Curvas características / Performance range



### BOMBA / PUMP / POMPE

TIPO TYPE	BRIDAS FLANGES BRIDES DNa / DNi	DIMENSIONES DIMENSIONS												
		Ha	Hi	l	m <sub>1</sub>	m <sub>2</sub>	n <sub>1</sub>	n <sub>2</sub>	Ka/Ki	d <sub>a</sub>	d <sub>i</sub>	n°a/n°i	d <sub>4</sub>	
25-100	25 ISO 7005-1 PN-16 ANSI B16.5 # 150 lbs	312	237	343	160	124	210	164	85	14	M-12	4	68	
32-115									100				68	
50-115									125				98	
32-125	32	332	272	353	180	140	240	190	100	18	M-16	4	68	
50-125	125								98					
32-160	32								292				265	212

Doc. E-0061 ed.1



Júpiter, 53 - P.I. Can Parellada - 08228 Terrassa  
BARCELONA  
inbeat@inbeat.es  
+34 93 785 25 16

[www.inbeat.es](http://www.inbeat.es)