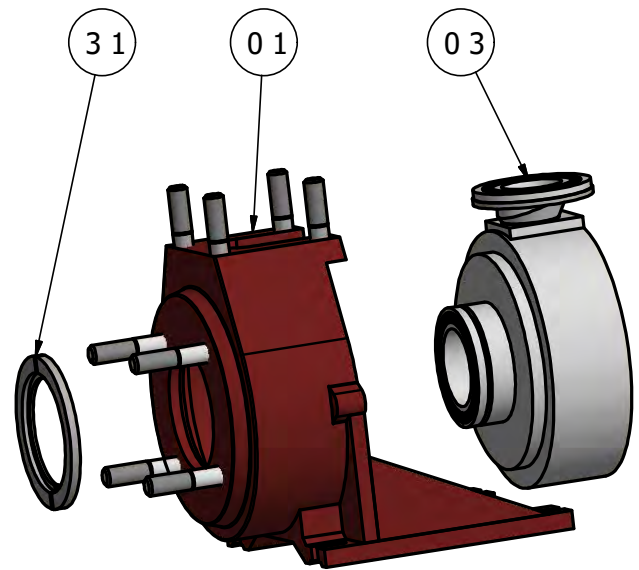


# **MPN series**

**Anticorrosive close-coupled centrifugal pump**

The MPN series reliability and flexibility make them ideal for frequently used small and medium facilities.

The constructive execution of the MPN series allows the pump dismantling without changing the location of the assembly set of pump support-pump casing. (pos 01-03-31)



The MPN range has a wide range of applications related to **highly corrosive and aggressive media**, such as small/medium scrubbers, transfer and recirculating processes covering the needs of the current industry in fields such as **desalination, metallurgy and environmental industries**.

**All wetted pump parts are made of thermoplastic and / or anticorrosive material.**



### CHARACTERISTICS -

Flows up to 50 m<sup>3</sup>/h. -  
Head up to 50 m.c.l.

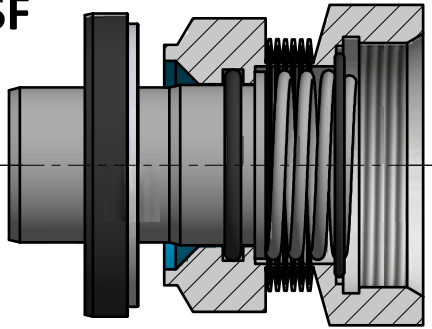
### MATERIALS

PP  
PEH  
PVC  
PVDF  
PTFE

The shaft sealing systems meet the needs of the process with the possibility of installing a wide range of market seals, either single, double opposition or external well balanced.

ATEX **2014/34/EU** arrangement under request

### Type SF



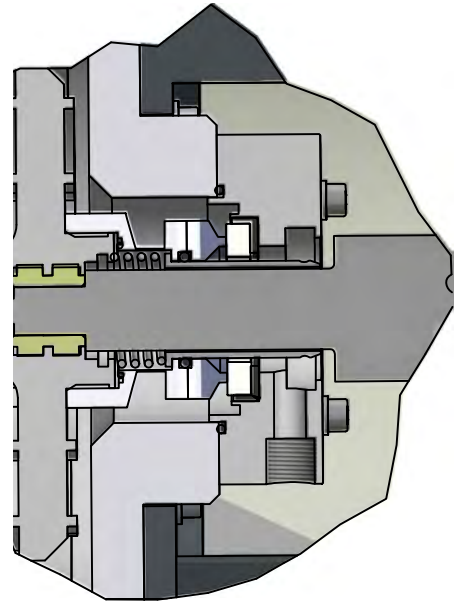
#### MATERIALS

-SF: PTFE+Vx1/CERAMIC

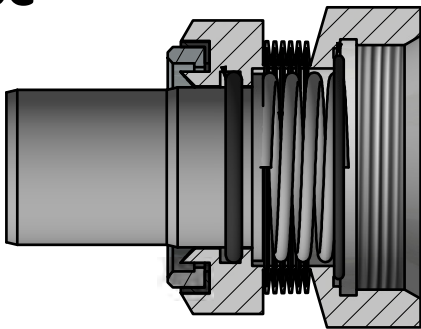
-SC: SSiC/SSiC

#### GASKETS:

-FPM/EPDM/PTFE/FFKM



### Type SC

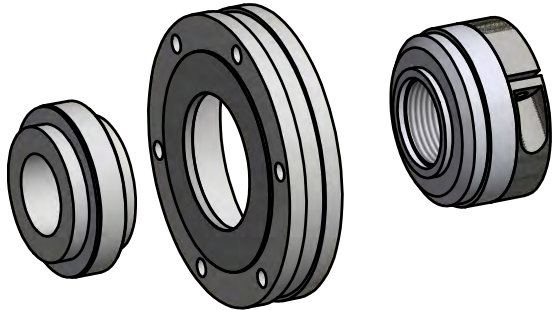


#### OPERATION LIMITS:

V=8,44 m/s

P= 6 bar

### Tipo SE



#### MATERIALES

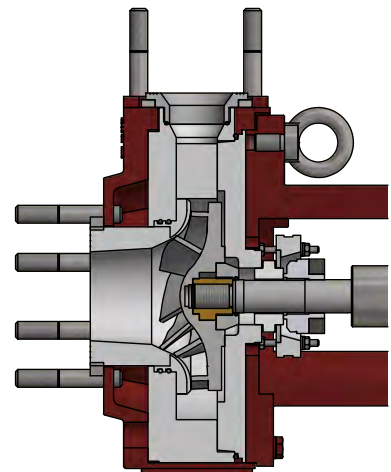
-PTFE+Vx1/CERAMIC -SSiC/SSiC

#### GASKETS:

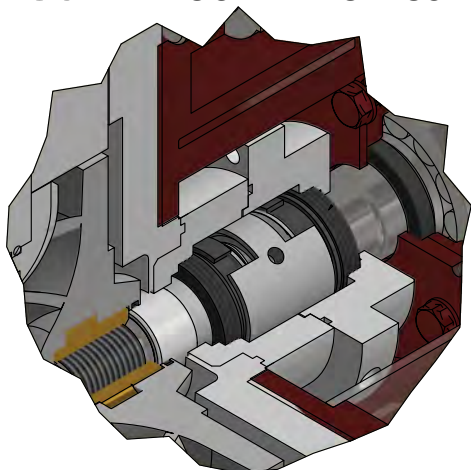
-FPM/EPDM/PTFE

#### OPERATION LIMITS:

V=8 m/s - P= 9 bar



### Type 8622 DOUBLE IN OPPOSITION - API plan 53/54 FLUSHING



#### MATERIALES : SSiC/SSiC

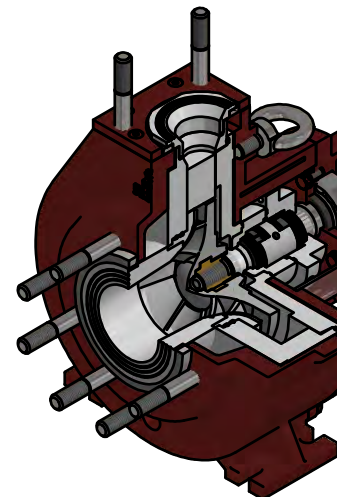
GASKETS: FPM/EPDM

#### OPERATION LIMITS:

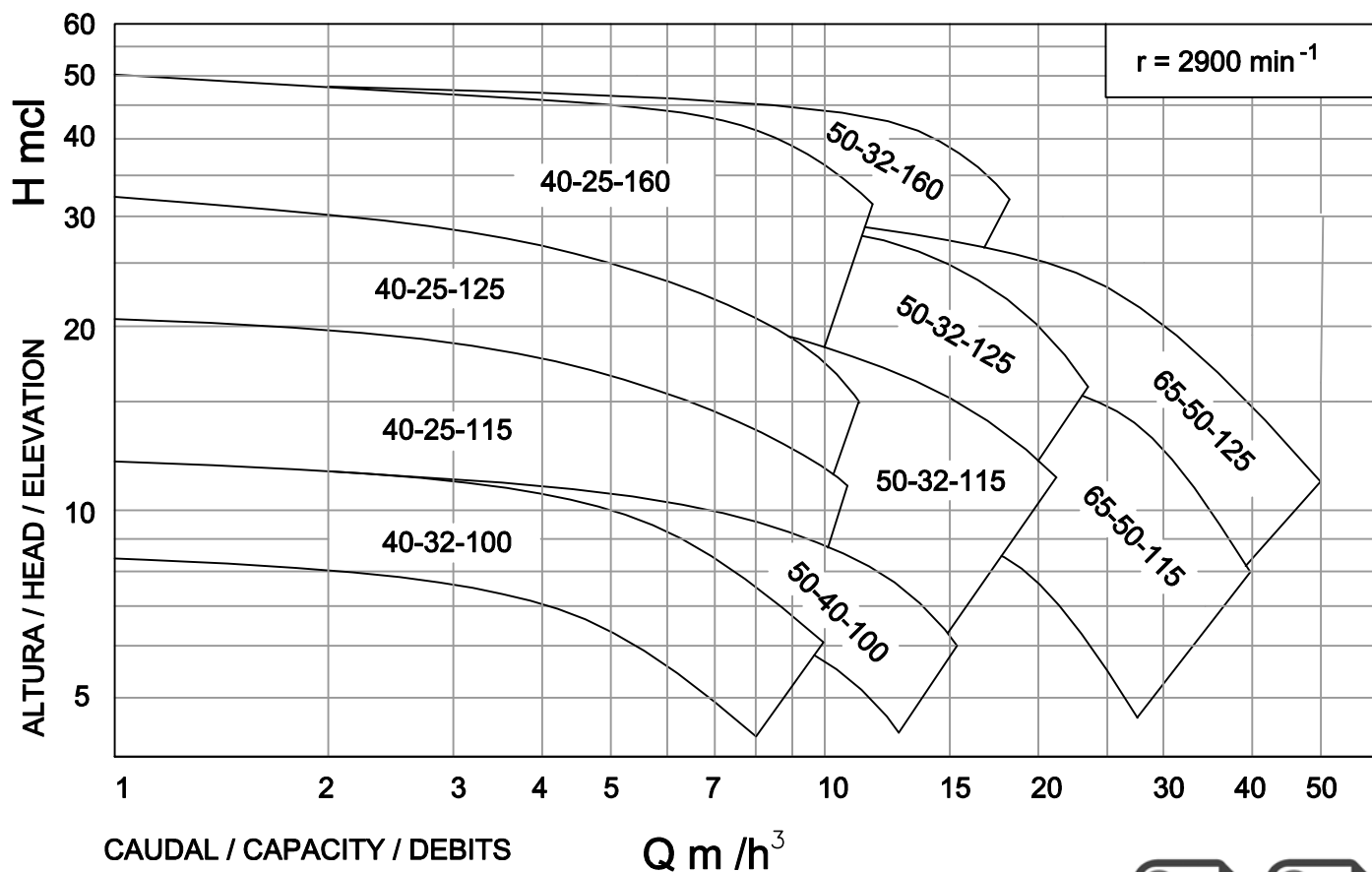
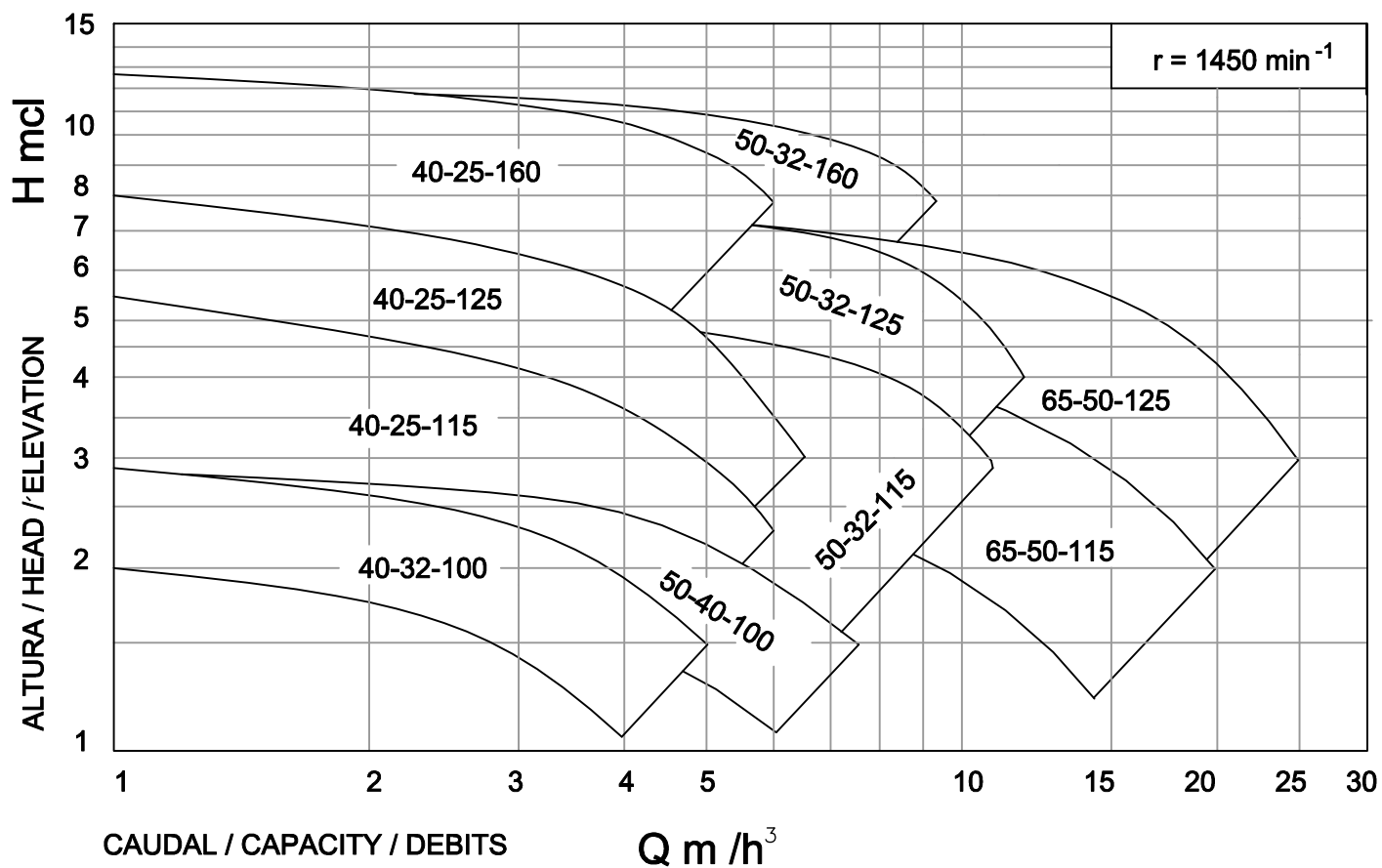
V=25 m/s

P= 10 bar

T= Up to 200°C



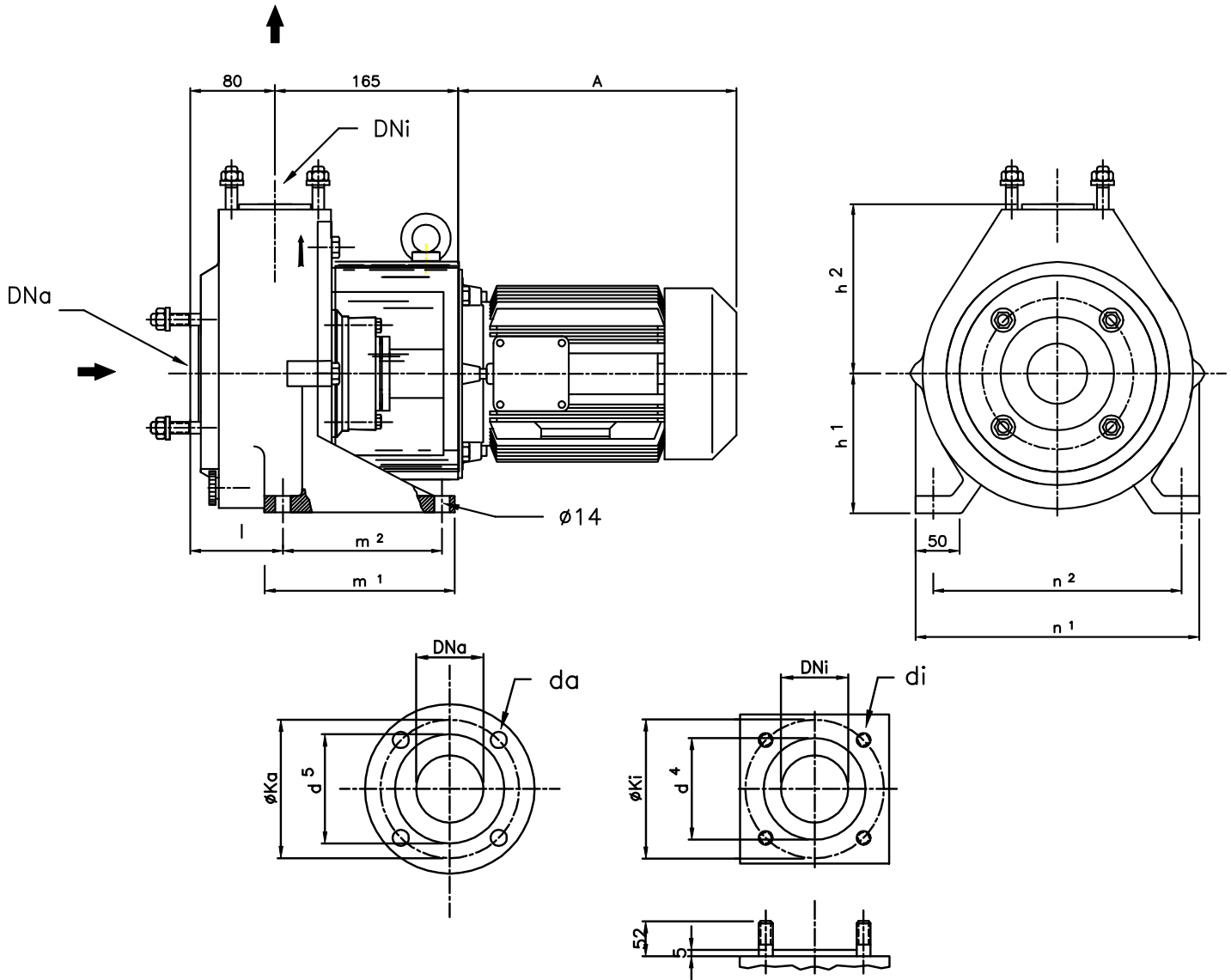
All wetted seal parts are made of thermoplastic and / or anticorrosive material.



**TESTS DE FUNCIONAMIENTO:**

Según ISO 9906 - 2





Dimensiones en mm. / Dimensions in mm. / Dimensions en mm.

### BOMBA / PUMP / POMPE

TIPO TYPE	BRIDAS FLANGES BRIDES		DIMENSIONES DIMENSIONS														
	MPN	DN <sub>a</sub>	DN <sub>i</sub>	h <sub>1</sub>	h <sub>2</sub>	l	m <sub>1</sub>	m <sub>2</sub>	n <sub>1</sub>	n <sub>2</sub>	K <sub>a</sub>	K <sub>i</sub>	d <sub>a</sub>	d <sub>i</sub>	d <sub>5</sub>	d <sub>4</sub>	nG <sub>a</sub> nG <sub>i</sub>
40-32-100	40	32	112	125	80	160	124	210	164	110	100	M-16	M-16	92	68	4	
50-40-100	50	40								125	110						M-12
40-25-115	40	25								110	85						M-12
40-25-125	40	25	132	140	90	180	140	240	190	110	85	M-16	M-16	92	68	4	
50-32-115	50	32								125	100						M-16
50-32-125	50	32								125	100						M-16
65-50-115	65	50								145	125						M-16
65-50-125	65	50	145	125	M-16												
40-25-160	40	25	132	160	90	180	140	265	212	110	85	M-16	M-12	92	68	4	
50-32-160	50	32								125	100		M-16				

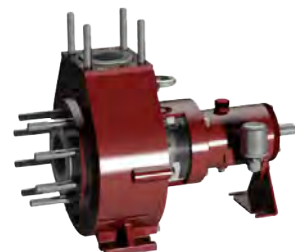
### MOTOR / MOTEUR

MOTOR ELECTRICO NORMALIZADO  
STANDARDIZED ELECTRIC MOTOR

MOTEUR ÉLECTRIQUE NORMALISÉ

TIPO/TYPE	71		80		90		100		112	
KW. 3000 rpm.	0.37	0.55	0.75	1.1	1.5	2.2	3		4	5.5 No estándar No standard Non standard
KW. 1500 rpm.	0.25	0.37	0.55	0.75	1.1	1.5	2.2	3	4	
A*	208		234		260		295		315	

\* Datos aprox. según fabricante / Approx. data according manufacturer



Júpiter, 53 - P.I. Can Parellada - 08228 Terrassa

BARCELONA

[www.inbeat.es](http://www.inbeat.es) • [inbeat@inbeat.es](mailto:inbeat@inbeat.es)

+34 93 785 25 16

